

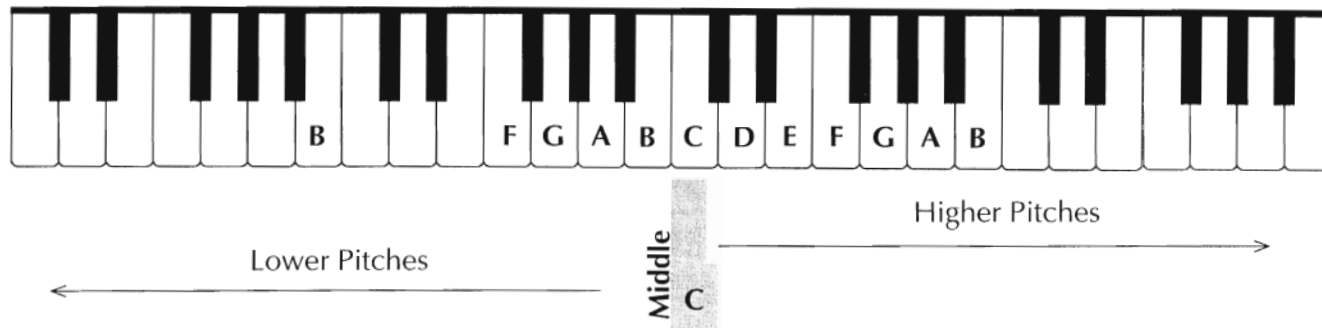
LEARN THE KEYBOARD

Name: _____

Theory Packet #2

It is helpful for musicians to know the piano keyboard. It helps you see how notes relate to each other. Each white key on the keyboard is named with a letter of the music alphabet: **A B C D E F** or **G**.

Write the name of each white key on the blank keys below.

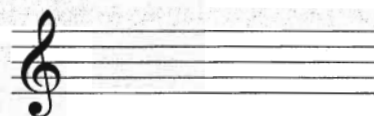
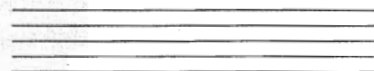


WHAT'S YOUR CLEF?

Music is written on a five-line *staff*.

At the beginning of every staff you will find a clef sign. Some players read music using a *treble clef*. Notice how the treble clef curls around the second line from the bottom.

Some players read music written using a *bass clef*. Notice how the bass clef has dots on the top two spaces.



- Using the given bass clef as a model, circle all of the correct bass clefs in the square.



- Using the given treble clef as a model, circle all of the correct treble clefs in the square.



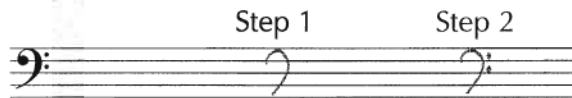
In what clef is your band music written? _____

CLEF CALLIGRAPHY

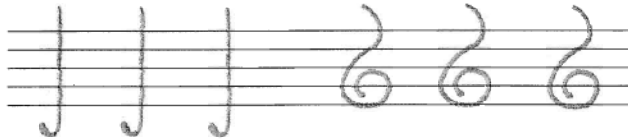
Here is how to draw a treble clef.



Here is how to draw a bass clef.



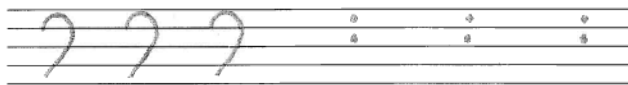
1. Finish these treble clefs.



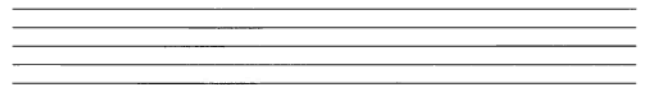
2. Draw six treble clefs of your own.



3. Finish these bass clefs.



4. Draw six bass clefs of your own.

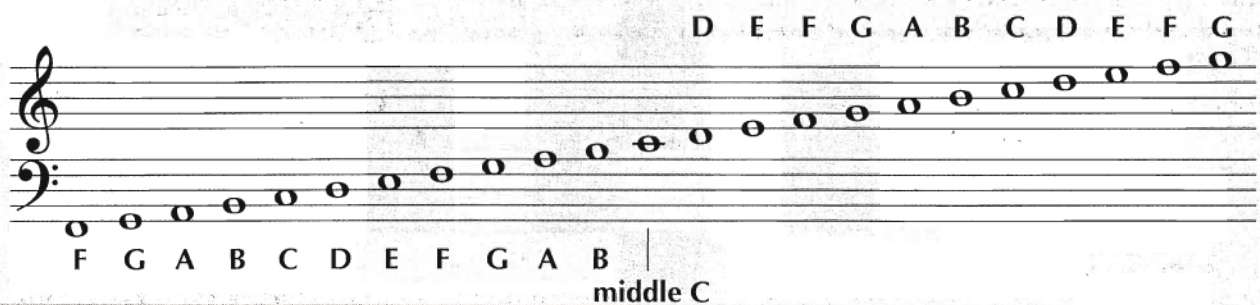


READING MUSIC

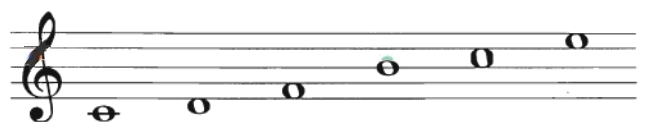
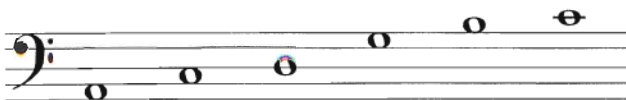
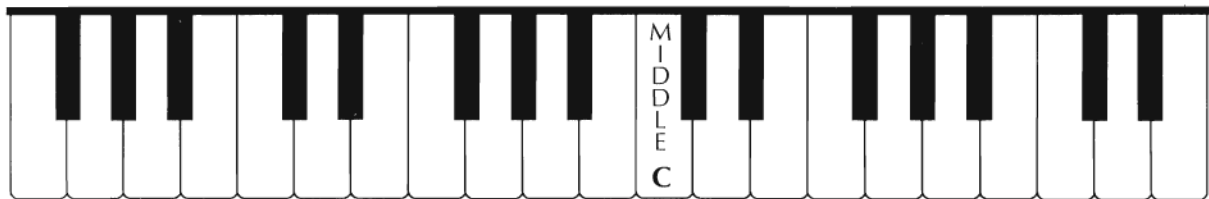
Notes are the symbols placed on the lines and in the spaces of the staff to make music.

In the bass clef, the names of the four spaces, bottom to top, are **A, C, E, and G**. The names of the five lines are **G, B, D, F, and A**.

In the treble clef, the names of the four spaces, bottom to top, are **F, A, C, and E**. The names of the five lines are **E, G, B, D, and F**.



1. Write the name of each white key on the blank keyboard below.
2. Write the note names on the lines provided.
3. Draw a line from each note in the staff to its correct piano key.



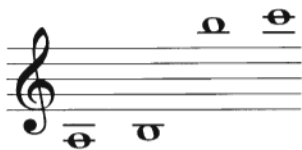
LEDGER LINES

When notes are placed above or below the staff, *ledger lines* are used to continue the pattern of lines and spaces. Middle C is placed on the first ledger line below the treble clef staff or above the bass clef staff.

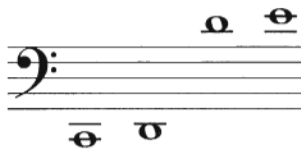


LEDGER SELF GO

1. Name these notes.



2. Name these notes.



3. Draw three C's, all on different lines or spaces.



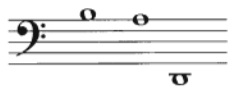
4. Draw three B's, all on different lines or spaces.



MUSICAL CROSSWORD

ACROSS

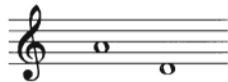
1.



3.



5.



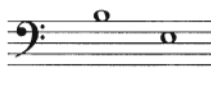
6.



8.



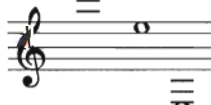
10.



11.



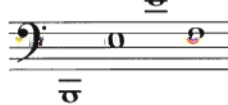
12.



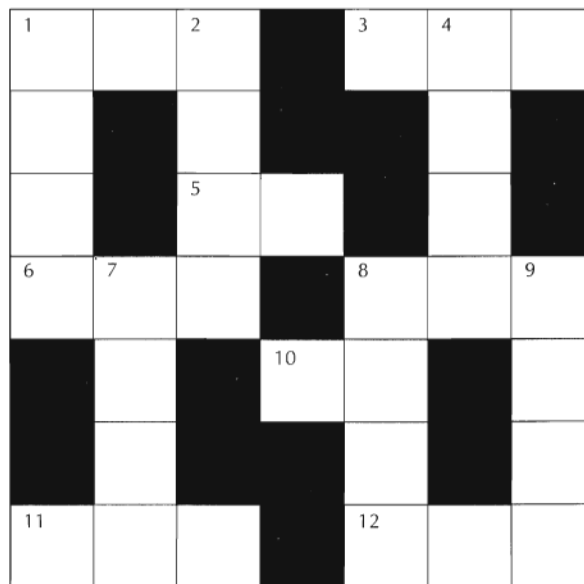
7.



8.



9.

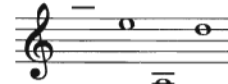


DOWN

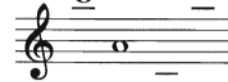
1.



2.



4.



RHYTHM ANTICS

Time Signature

$\frac{4}{4}$ = 4 counts in each measure

$\frac{4}{4}$ = quarter note gets 1 count

$\frac{4}{4}$ = **C** (common time)

Rest Type

whole rest

half rests

quarter rests

Counts

4 = 2 + 2 = 1 + 1 + 1 + 1

Note Type

whole note

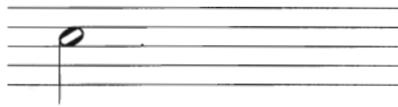
half notes

quarter notes

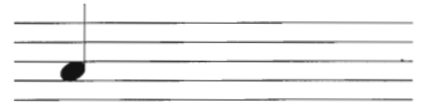
1. Draw four whole notes.



2. Draw four half notes.



3. Draw four quarter notes.



4. Draw four whole rests.



5. Draw four half rests.



6. Draw four quarter rests.



MUSIC MATH

Draw in a note or rest to complete each equation.

1.

$$\text{whole note} - \text{half note} = \boxed{\phantom{\text{note}}}$$

note

2.

$$\text{quarter rest} + \text{quarter rest} + \text{half rest} = \boxed{\phantom{\text{rest}}}$$

rest

3.

$$\text{quarter note} + \text{quarter note} + \text{quarter note} - \text{half note} = \boxed{\phantom{\text{note}}}$$

note

4.

$$\text{quarter rest} + \text{half rest} + \text{half rest} - \boxed{\phantom{\text{rest}}} = \text{whole rest}$$

rest

COMPOSER CALAMITY

Fill in the name of any composer you know and then help solve the problem.

_____ (name) needs ideas for a new piece. Using only half notes, quarter notes, half rests, and quarter rests, compose four rhythms _____ (name) can use. Make sure that each measure has four counts!

1.



2.



3.



4.



THEORY WORKSHEET # 1 — TREBLE CLEF

Fill in the note names.

1 
— — — — — — — —


Fill in the note names.

2 
— — — — — — — —

Fill in the note names.

3 
— — — — — — — —

Fill in the note names.

4 
— — — — — — — —

Write these notes using the lines only.

5 
E B G D F B G D

Write these notes using the spaces only.

6 
F A E C A C F E

Write these notes using lines and spaces.

7 
G E F D A C B D

Write these notes using lines and spaces.

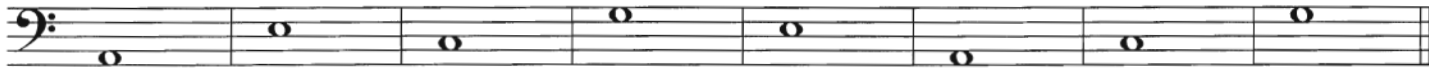
8 
A F B E G C F D

THEORY WORKSHEET # 1 — BASS CLEF

Fill in the note names.

1 
 — — — — — — — —

Fill in the note names.

2 
 — — — — — — — —

Fill in the note names.

3 
 — — — — — — — —

Fill in the note names.

4 
 — — — — — — — —

Write these notes using the lines only.

5 
A B G D F B G D

Write these notes using the spaces only.

6 
G A E C A C G E

Write these notes using lines and spaces.

7 
G E F D A C B D

Write these notes using lines and spaces.

8 
A F B E G C F D

THEORY WORKSHEET # 2 — TREBLE CLEF

Fill in the note names.

1 

Fill in the note names.

2 

Write these notes using ledger lines only.

3 
B A C A C B A C

Write these notes using the staff and ledger lines.

4 
F B E C D G A F

Write the notes that match these words.

5 
CAB FAD BEAD DAB

6 
BEEF CAGE BAD DEAD

7 
FACE BAG CAD BEG

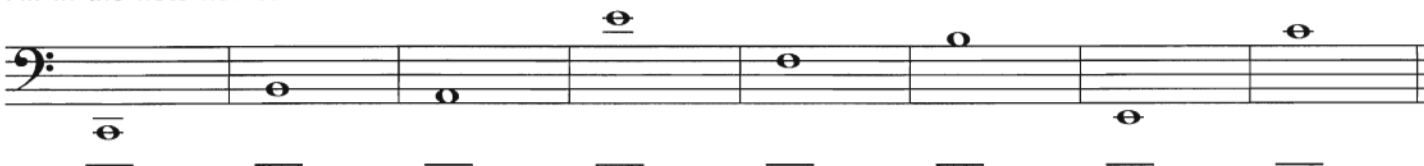
8 
EGG FEED GAB ADD

THEORY WORKSHEET # 2 — BASS CLEF

Fill in the note names.

1 

Fill in the note names.

2 

Write these notes using ledger lines only.

3 

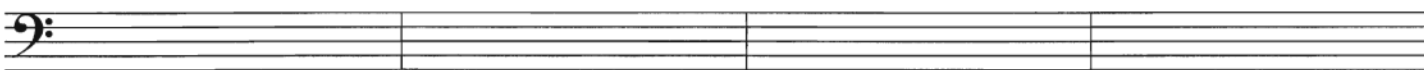
D C E C E D C E

Write these notes using the staff and ledger lines.

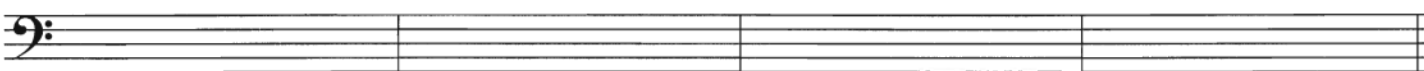
4 

F B E C D G A F

Write the notes that match these words.

5 

CAB FAD BEAD DAB

6 

BEEF CAGE BAD DEAD

7 

FACE BAG CAD BEG

8 

EGG FEED GAB ADD